

Nevada Transportation Conference

Chris Koenig & Chris Miske



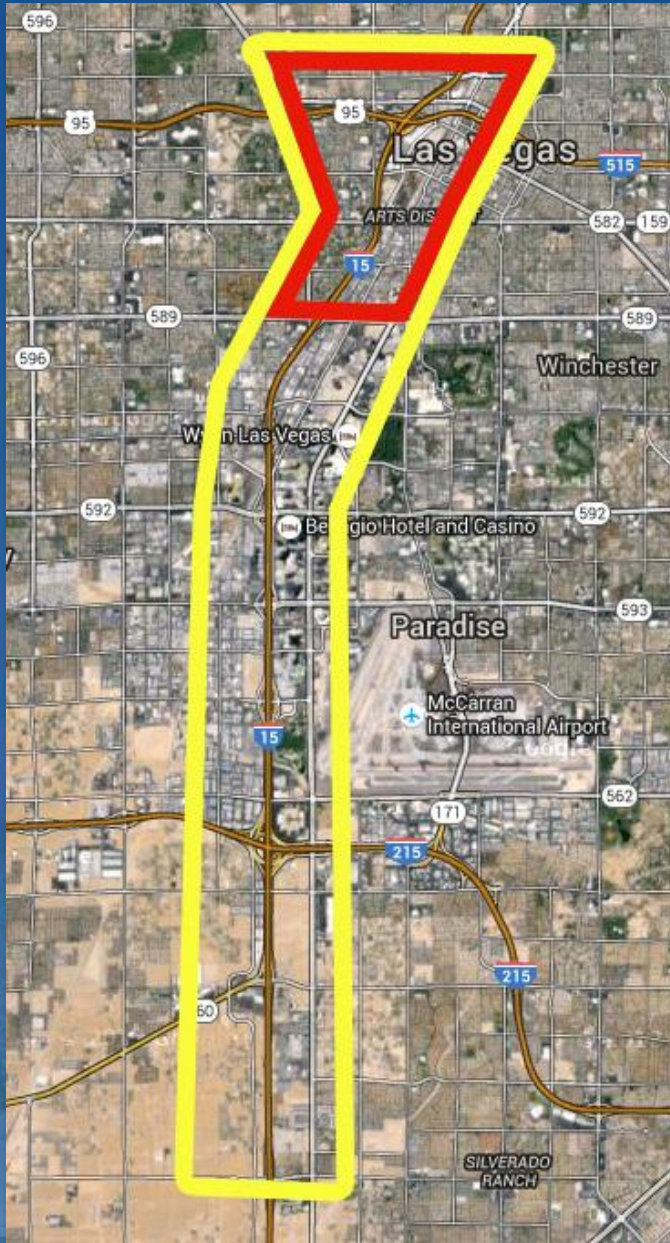
Kiewit





PROJECT OVERVIEW

Project Area



- Main Focus: I-15 Sahara Ave to Spaghetti Bowl
- I-15 HOV Conversion to Silverado Ranch



Project Elements

- New I-15/Charleston Interchange
- Southbound I-15 Ramp Braiding
- New Connections and Downtown Access
- HOV Flyover Bridge
- HOV Interchange - Neon Gateway
- ATM Signs and Gantries

Charleston Interchange



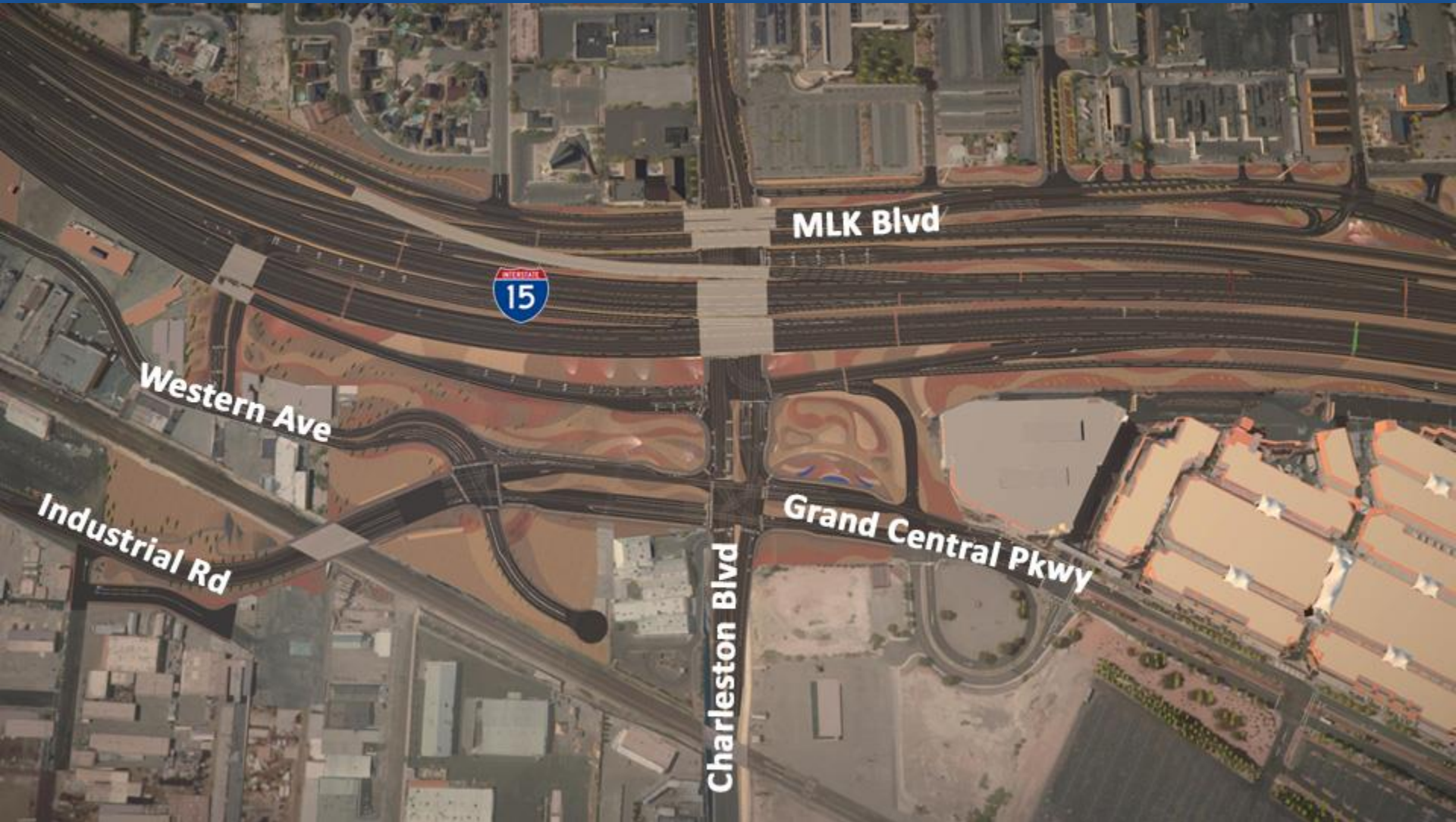
New Charleston Interchange



Southbound I-15 Ramp Braiding



Local Street Connections



HOV Connector



Neon Gateway





PROGRESS

Aerial of Work near I-15



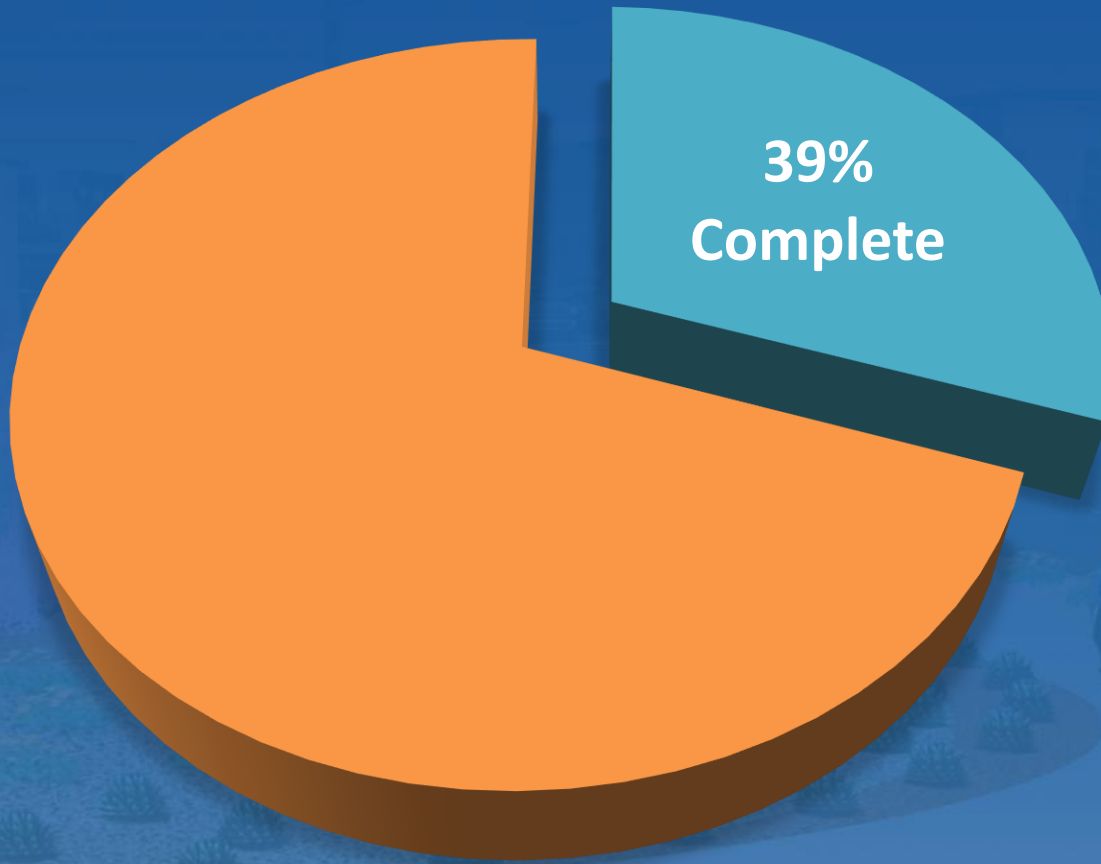
Aerial of Work near I-15



Aerial of Work near US95 & MLK



Construction Days



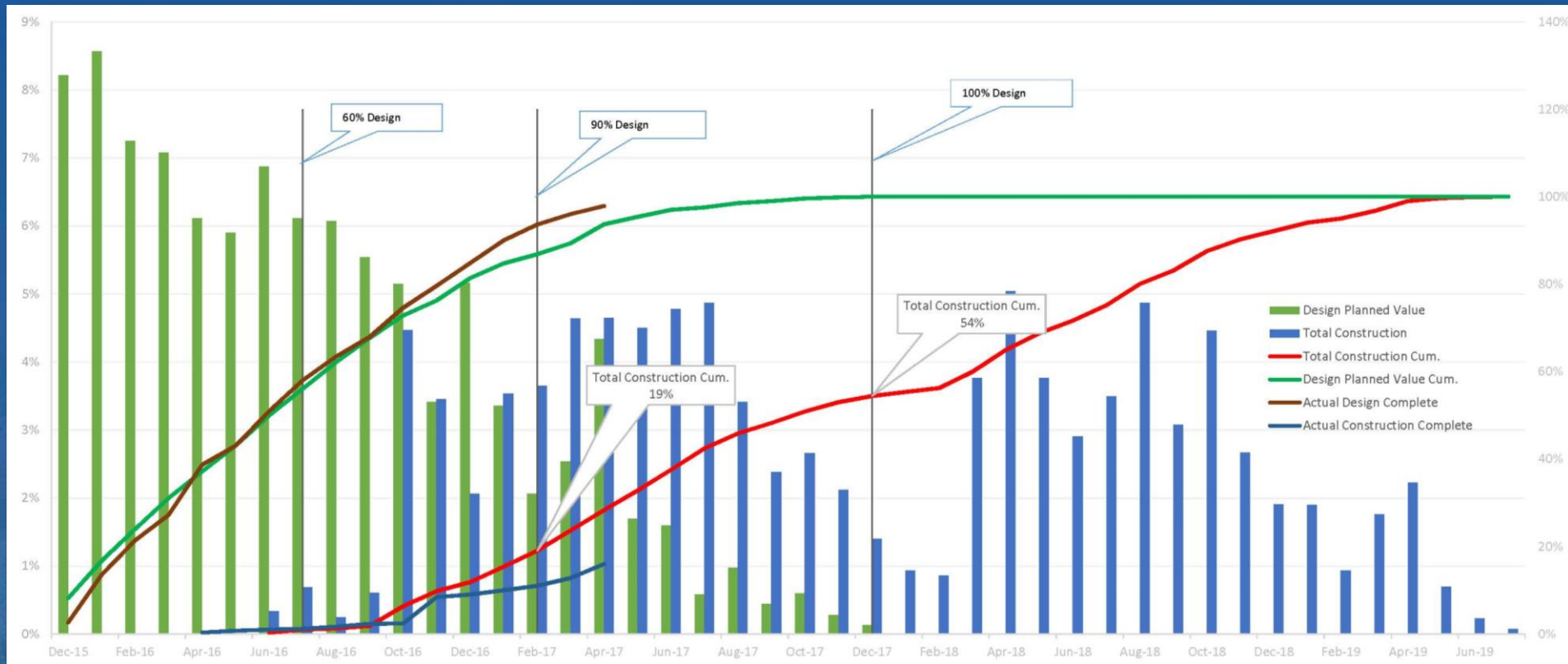
Total Contract Days

1,338

As of today

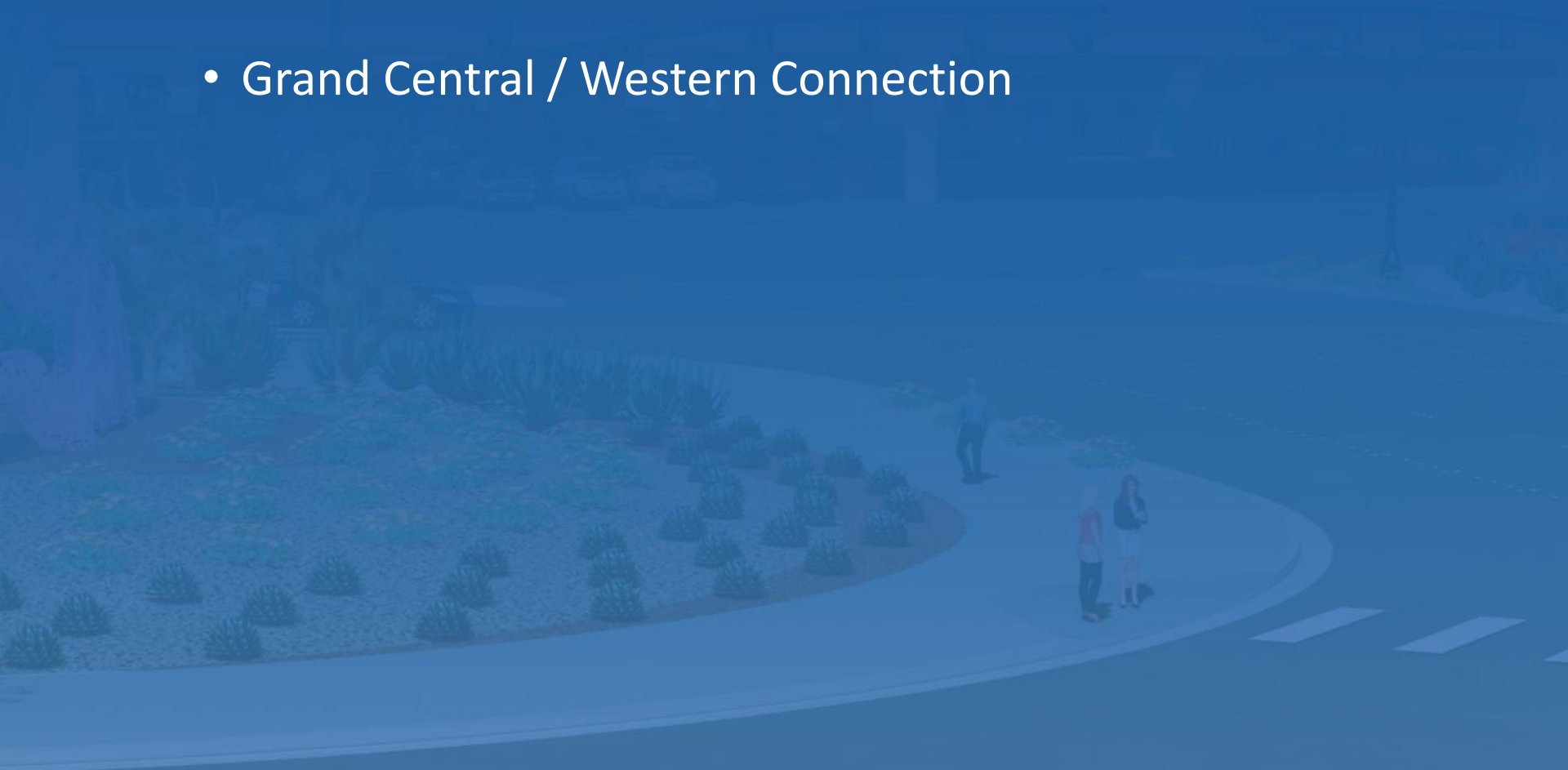
527

Design vs. Construction Completion

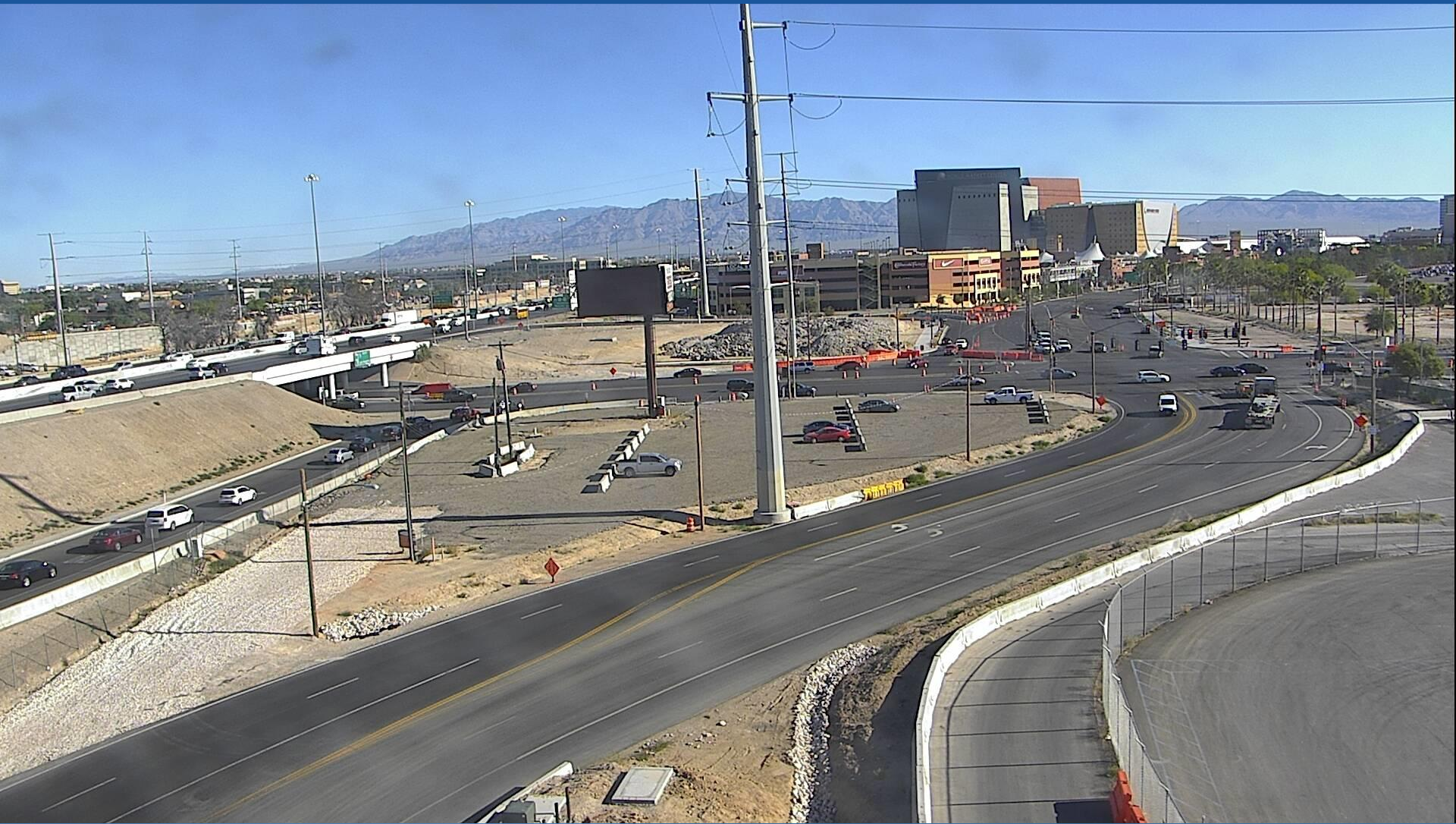


Fulfilling Commitments

- New Local Street Connections
 - Grand Central / Western Connection



Grand Central Pkwy/Western Connection



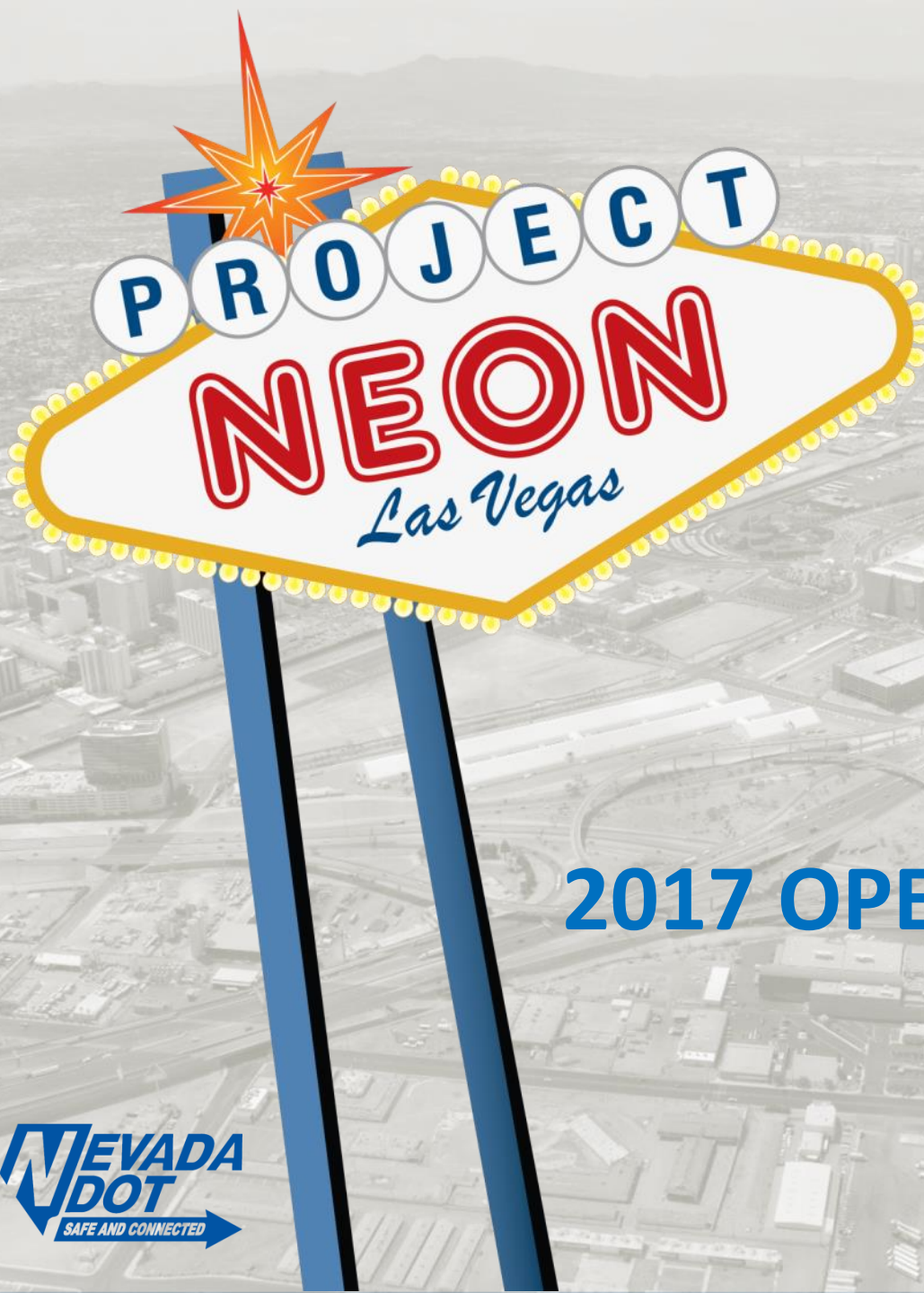
Fulfilling Commitments

- On-time Delivery
 - SB US-95 Rancho Off-Ramp Improvements
 - Downtown I-515 Bridge Deck Repairs
 - MLK to US-95 NB On-Ramp



Fulfilling Commitments

- Minimizing Disruptions
 - Grand Central Pkwy Opened Early
 - Weekend Closures Opened Early
 - 3 Separate Bridges Demolished
 - US-95 EB to I-15 SB Detour Construction
 - Temporary I-15 SB to US-95 WB Ramp



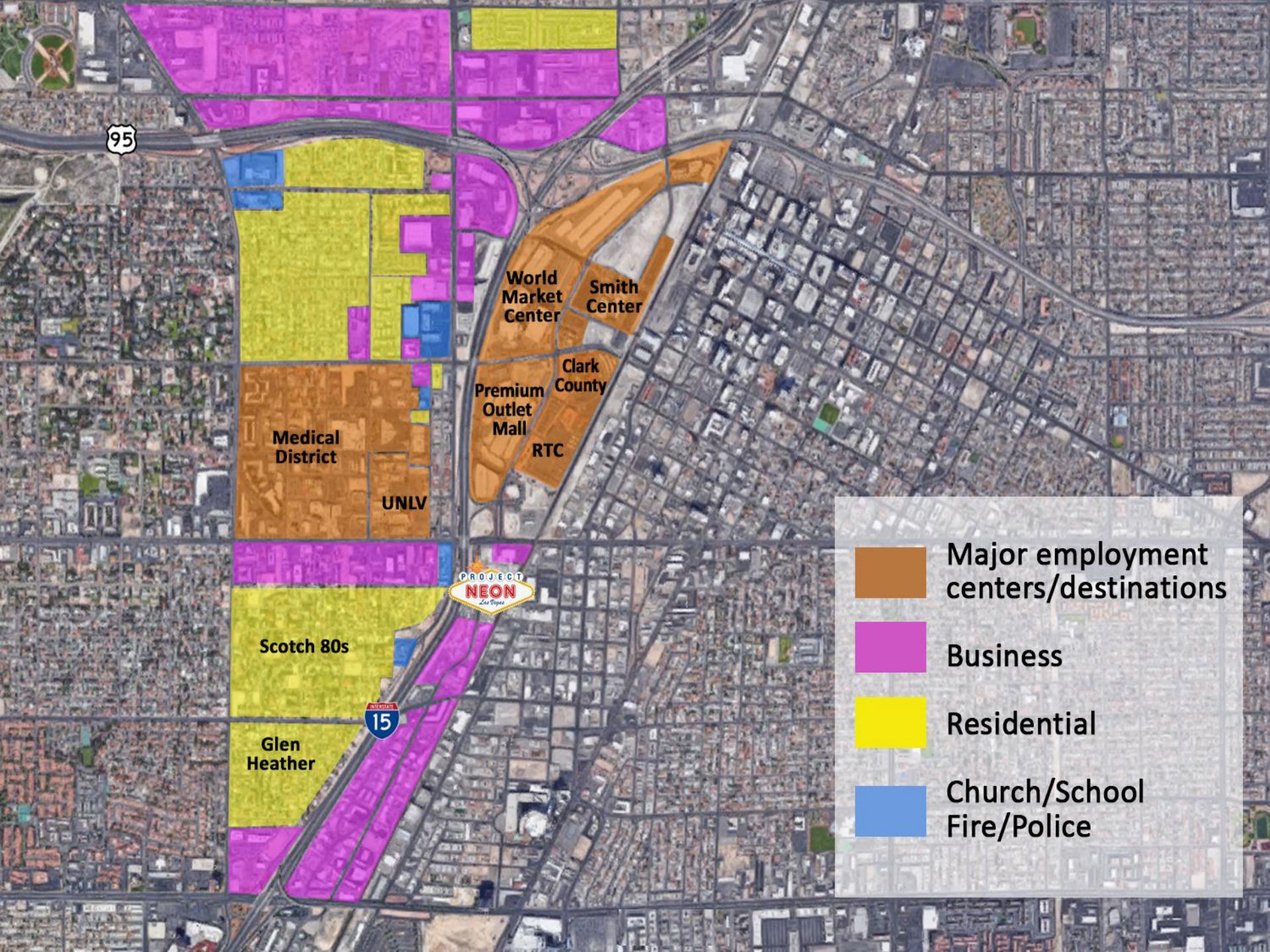
2017 OPENINGS

New MLK Blvd Alignment





STAKEHOLDERS



95

World
Market
Center

Smith
Center

Premium
Outlet
Mall

Clark
County

RTC

Medical
District

UNLV



Scotch 80s

15

Glen
Heather

- Major employment centers/destinations
- Business
- Residential
- Church/School
Fire/Police

Stakeholder Participation



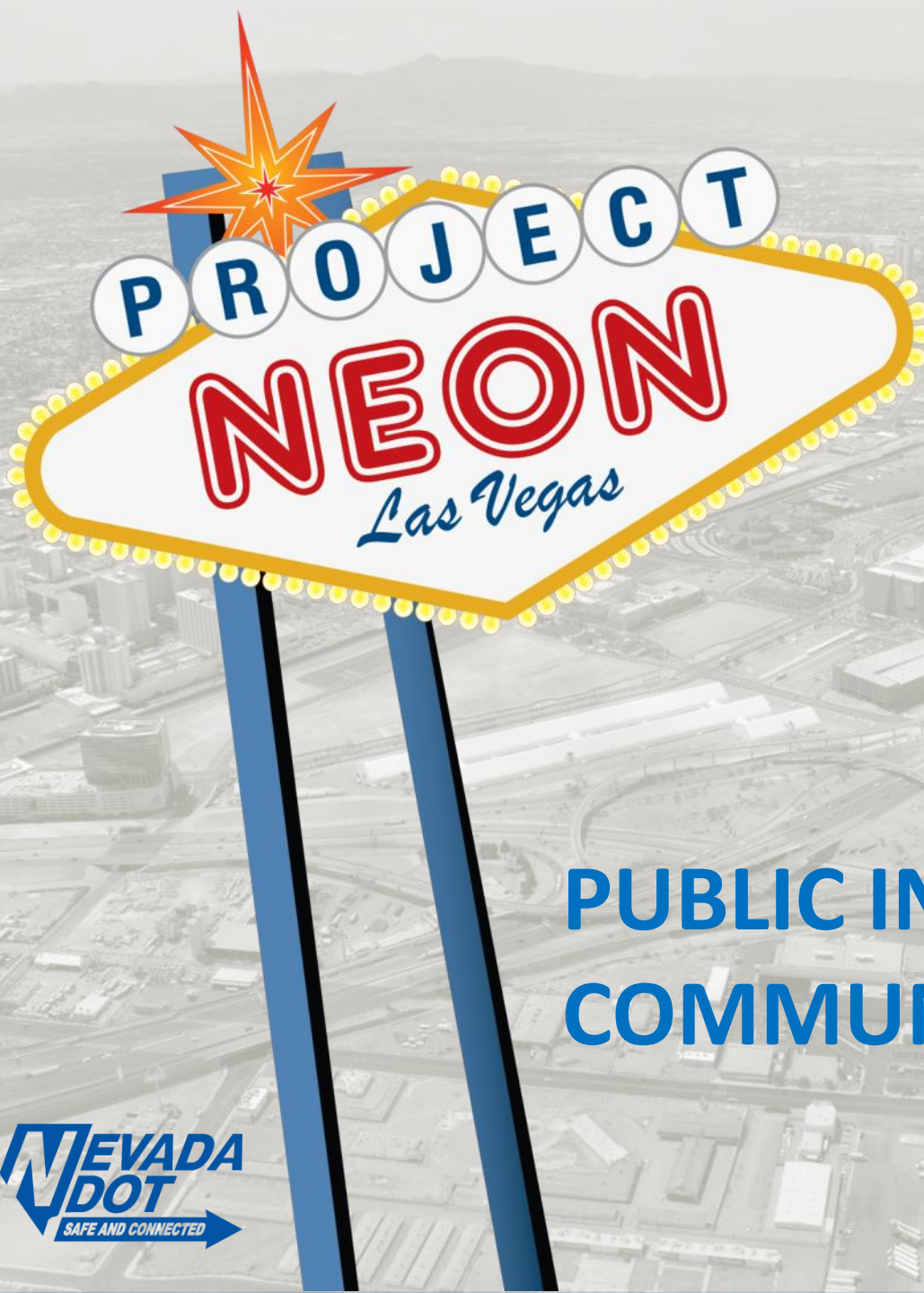
Stakeholder Participation

Little
Darlings



Little
Darlings





PUBLIC INVOLVEMENT & COMMUNICATION TOOLS

Communication Tools





Website



HOTLINE
702-293-NEON (6366)

HOME
Project Neon

LEARN
about the project

KNOW
before you go

VIEW
maps & photos

READ
our latest news

JOIN
the team

CONTACT
for information



Zipper Merge

A Zipper Merge encourages motorists to use all available lanes until the merge point, and then alternate in a "zipper" fashion into the open lane.

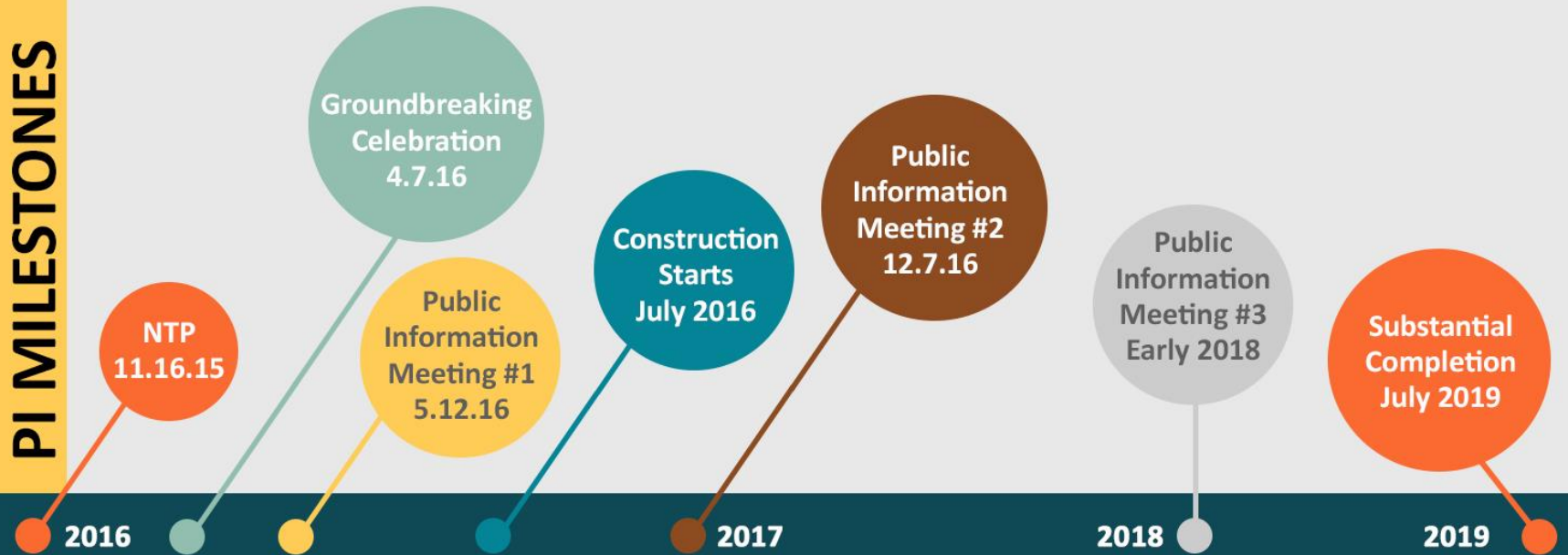
READ MORE





BRANDED CAMPAIGNS

PI MILESTONES



PI CAMPAIGNS

"Welcome to the neighborhood!"

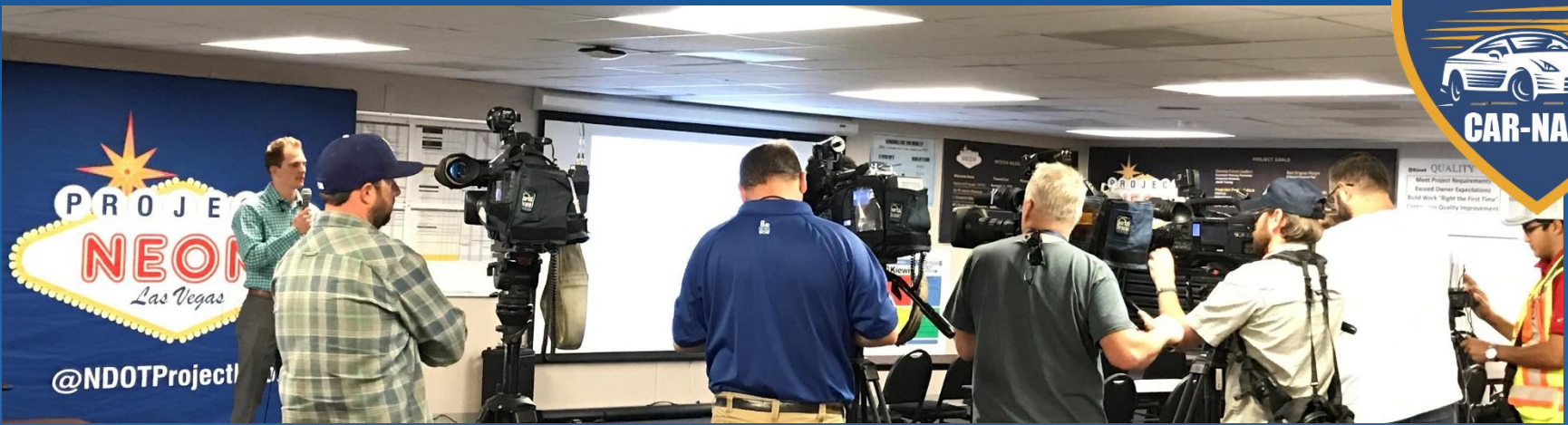


I-15 Impacts
(Branding TBD)

Continuous effort to inform stakeholders and public of upcoming construction/impacts



Press Conferences



Media Outreach



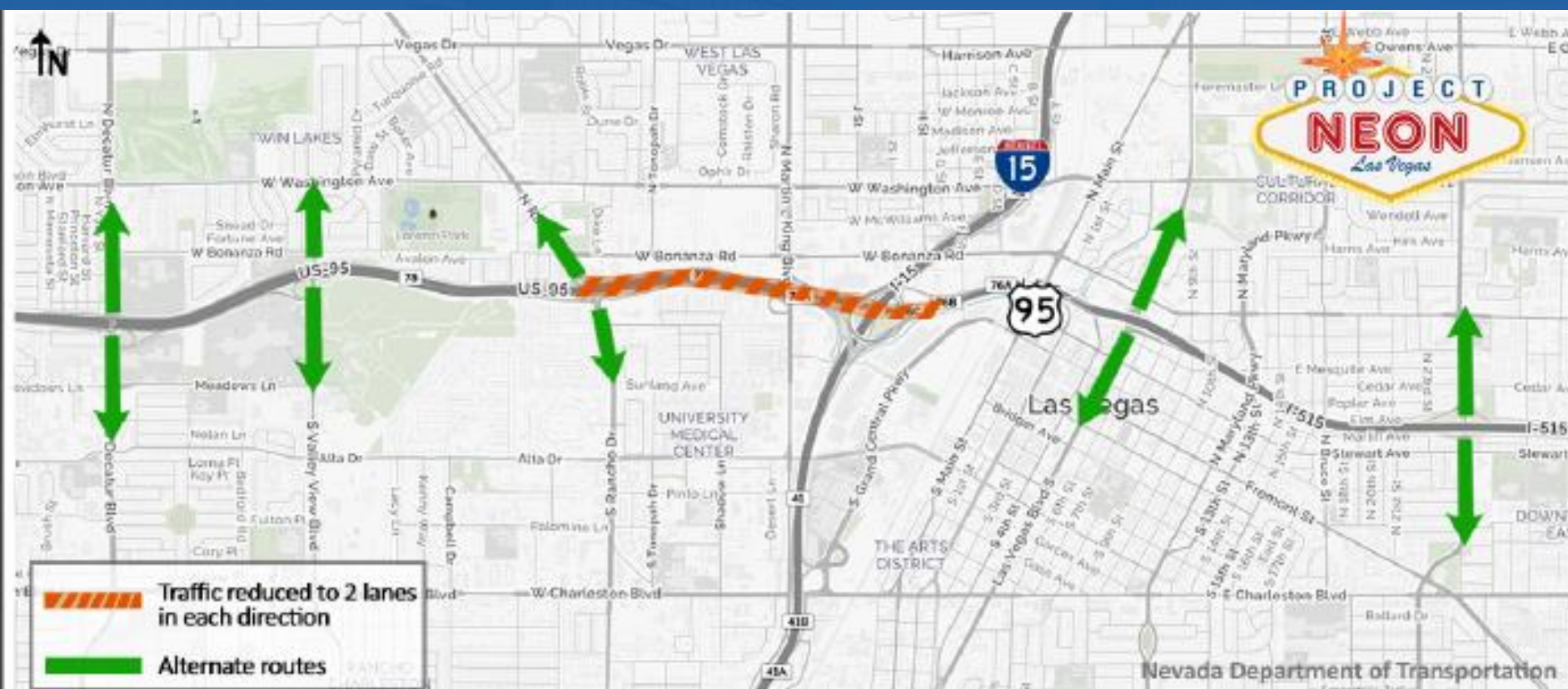
Before CAR-NADO.....

- ✓ Game of Cones
- ✓ The Rampening
- ✓ Rampergeist
- ✓ Ramp-Nado



95

THE BIG SQUEEZE





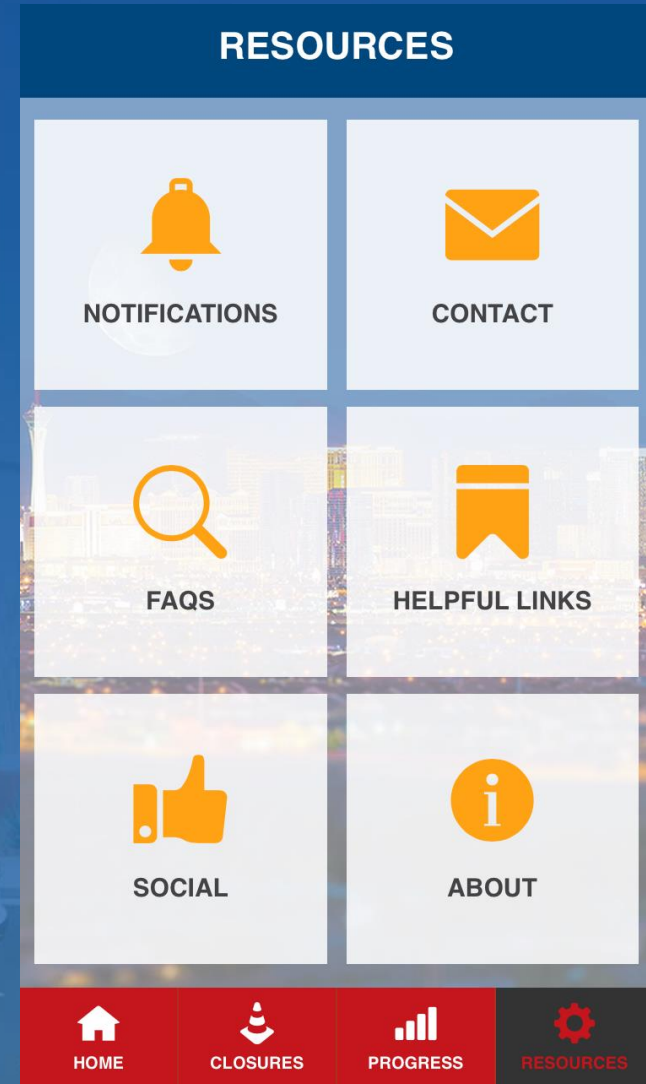
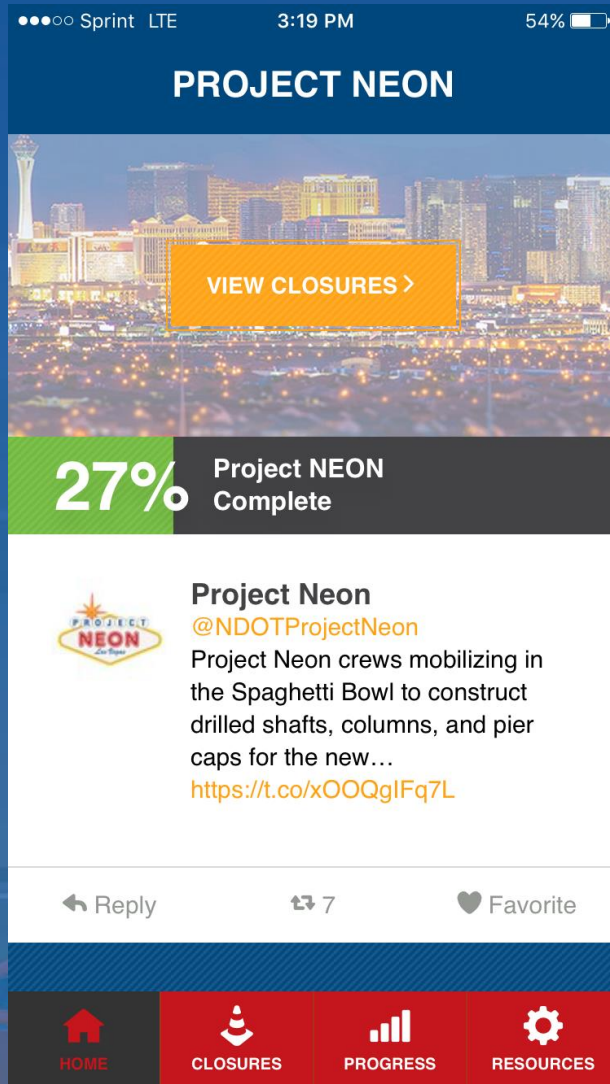
Take turns, move faster

ZIPPER MERGE



NEW STRATEGIES FOR NDOT

Mobile App!



RTC Pedestrian Shuttle



MLK BLVD CLOSED

Between Bonanza Rd and
US 95 for bridge demo

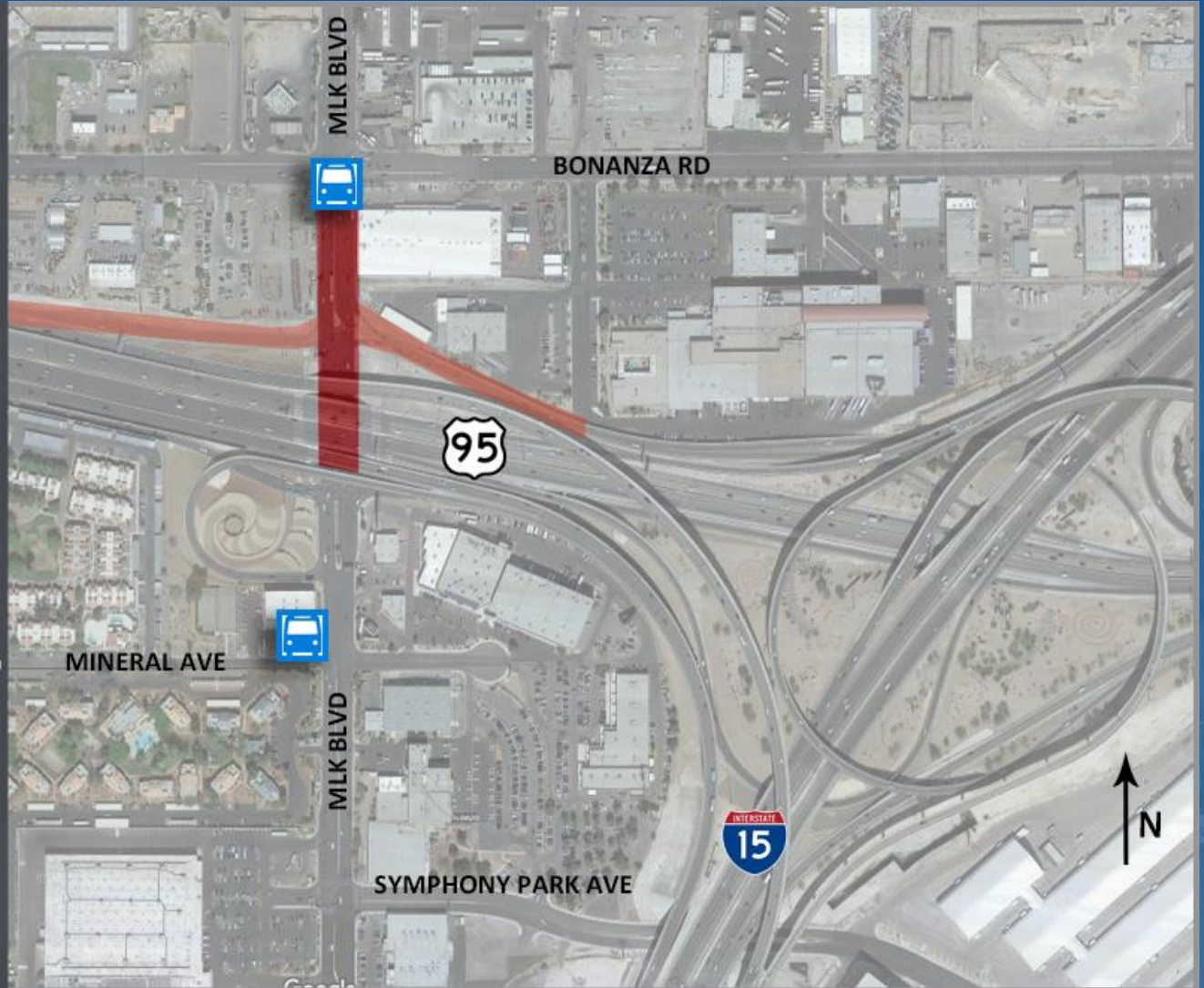
FRI, MARCH 24, 10PM -
MON, MARCH 27, 5AM*

MLK BLVD
ON-RAMP TO US 95 N
AND NB OFF-RAMP TO MLK BLVD
ALSO CLOSED

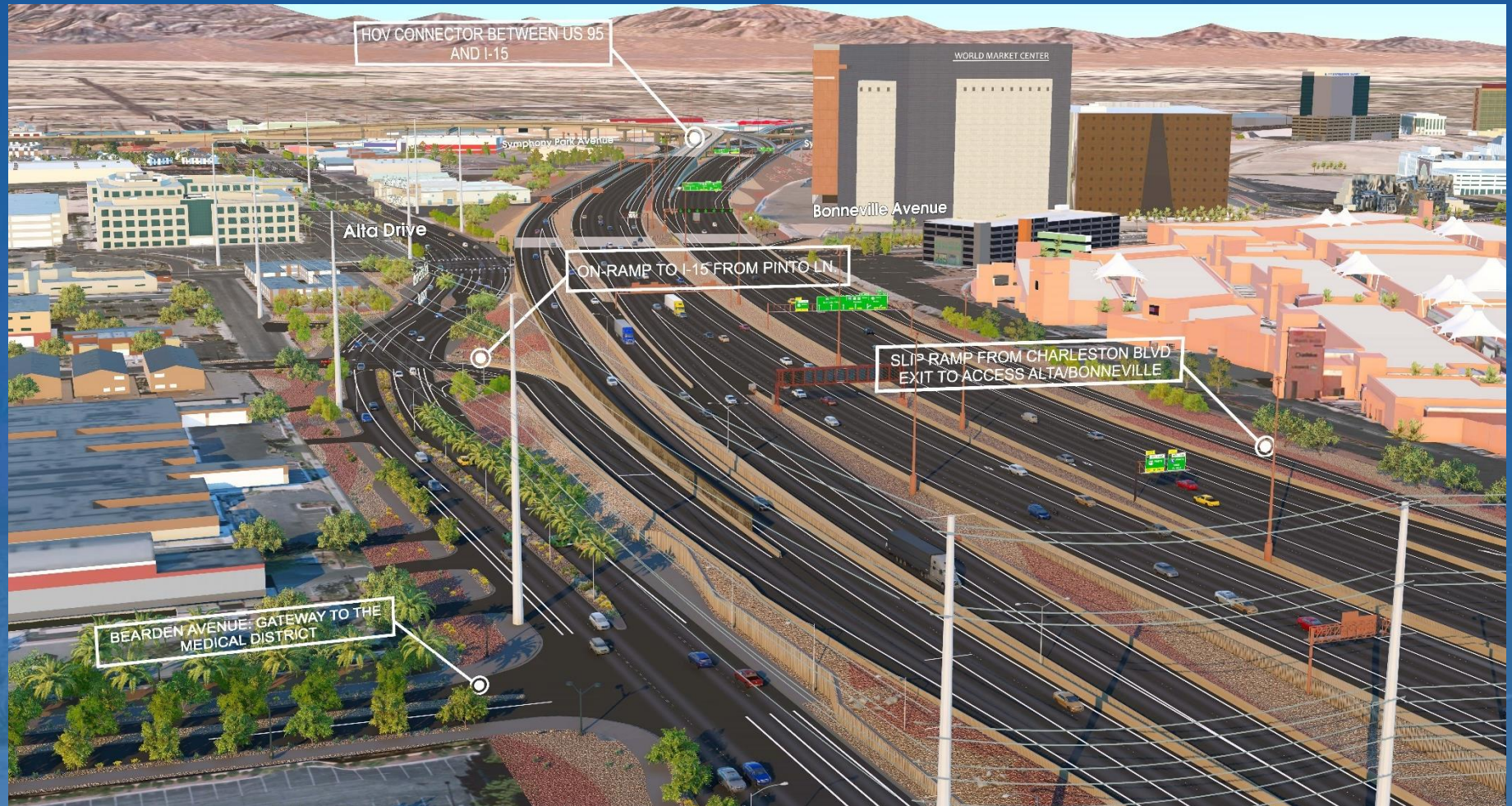


= PEDESTRIAN SHUTTLE

*Subject to change



3D Visualizations



Questions?

